

Towards breast tomography with synchrotron radiation at Elettra: first images

R Longo^{1,2}, F Arfelli^{1,2}, R Bellazzini^{3,4}, U Bottigli⁵, A Brez^{3,4}, F Brun^{2,6}, A Brunetti⁷, P Delogu^{4,8}, F Di Lillo⁹, D Dreossi¹⁰, V Fanti¹¹, C Fedon^{1,2}, B Golosio⁷, N Lanconelli¹², G Mettivier⁹, M Minuti^{3,4}, P Oliva⁷, M Pinchera^{3,4}, L Rigon^{1,2}, P Russo⁹, A Sarno⁹, G Spandre^{3,4}, G Tromba¹⁰ and F Zanconati¹³

¹ Department of Physics, University of Trieste, Trieste, Italy

² INFN Sezione di Trieste, Trieste, Italy

³ PiXirad Imaging Counters srl, Pisa, Italy

⁴ INFN Sezione di Pisa, Pisa, Italy

⁵ Department of Physics, University of Siena, Siena, Italy

⁶ Department of Engineering and Architecture, University of Trieste, Trieste, Italy

⁷ University of Sassari & INFN Sezione di Cagliari, Sassari, Italy

⁸ Department of Physics, University of Pisa, Pisa, Italy

⁹ Department of Physics, University of Naples Federico II & INFN Sezione di Napoli, Naples, Italy

¹⁰ Elettra-Sincrotrone Trieste S.C.p.A, Basovizza, Trieste, Italy

¹¹ Department of Physics, University of Cagliari & INFN Sezione di Cagliari, Cagliari, Italy

¹² Department of Physics and Astronomy, University of Bologna & INFN Sezione di Bologna, Bologna, Italy

¹³ Department of Medical Science, Pathology Unit, Cattinara Hospital, University of Trieste, Trieste, Italy

Abstract

The aim of the SYRMA-CT collaboration is to set-up the first clinical trial of phase-contrast breast CT with synchrotron radiation (SR). In order to combine high image quality and low delivered dose a number of innovative elements are merged: a CdTe single photon counting detector, state-of-the-art CT reconstruction and phase retrieval algorithms. To facilitate an accurate exam optimization, a Monte Carlo model was developed for dose calculation using GEANT4. In this study, high isotropic spatial resolution ($120 \mu\text{m}$)³

CT scans of objects with dimensions and attenuation similar to a human breast were acquired, delivering mean glandular doses in the range of those delivered in clinical breast CT (5–25 mGy). Due to the spatial coherence of the SR beam and the long distance between sample and detector, the images contain, not only absorption, but also phase information from the samples. The application of a phase-retrieval procedure increases the contrast-to-noise ratio of the tomographic images, while the contrast remains almost constant. After applying the simultaneous algebraic reconstruction technique to low-dose phase-retrieved data sets (about 5 mGy) with a reduced number of projections, the spatial resolution was found to be equal to filtered back projection utilizing a four fold higher dose, while the contrast-to-noise ratio was reduced by 30%. These first results indicate the feasibility of clinical breast CT with SR.

Keywords: breast tomography, synchrotron radiation, phase contrast imaging

(Some figures may appear in colour only in the online journal)

1. Introduction

In x-ray breast imaging the challenge is to match high image quality and an acceptable delivered dose. In the last few decades an increased effort in the transition from planar imaging (digital mammography) to 3D imaging can be noticed in clinical practice. The development of new digital detectors and powerful reconstruction algorithms allows the realization of 3D mammographic systems, such as tomosynthesis and tomographic scanners. Breast tomosynthesis (Sechopoulos 2013a, 2013b) is widely used in clinical exams and very good results have been published, despite the intermediate quality between mammography and tomography in terms of voxel size and contrast. A few cone beam breast CT prototypes are in clinical use in the world (Prionas *et al* 2010, O'Connell *et al* 2014, Zhao *et al* 2015); the main constraint in the development of this technique is the necessary limitation of the delivered dose (Kalender *et al* 2012, Vedantham *et al* 2013, Sarno *et al* 2015).

At the same time, the so-called x-ray phase-contrast (PhC) imaging techniques have been investigated in mammography with promising results (Coan *et al* 2013). The first x-ray PhC mammography clinical study performed with synchrotron radiation (SR), based on the propagation-based PhC technique, demonstrated an improvement in the image quality and in the diagnostic performance without increasing the delivered dose when compared to conventional mammography (Castelli *et al* 2011, Longo *et al* 2014). The transition of PhC mammography from SR radiation facilities to hospitals is a research topic for a number of groups (Tanaka *et al* 2005, Bravin *et al* 2013).

The application of PhC techniques to tomographic imaging of breast tissues is quite promising, particularly when phase and absorption signals are studied separately (Brun *et al* 2014, Grandl *et al* 2014). In conventional tomography the images represent maps of the x-ray attenuation coefficients of the sample. In propagation-based PhC tomography the phase information can be decoupled from absorption when a phase retrieval algorithm is applied to the projections before tomographic reconstruction (with suitable approximations on the sample properties). This procedure increases the contrast resolution in the reconstructed images (Cloetens *et al* 1999, Paganin *et al* 2002, Chen *et al* 2013). The benefits of phase retrieval when using an algorithm based on the homogeneous transport of an intensity equation (Paganin *et al* 2002)

are well acknowledged. In general, the application of phase retrieval results in reduced noise, while preserving the sharpness of the edges when used with a proper parameter quantifying the relationship between the imaginary part (β) and the decrement from unity (δ) of the complex refractive index $n = 1 - \delta + i\beta$ of the object (e.g. Beltran *et al* 2011; Nesterets and Gureyev 2014). The application of this approach has already proven to be beneficial also for breast tomography (e.g. Pacilè *et al* 2015; Nesterets *et al* 2015).

In x-ray imaging, high efficiency, direct conversion and photon counting detectors show great advantages with respect to detectors based on indirect detection and charge integration. The most remarkable advantage of photon counting is the possibility of obtaining a Poisson-dominated signal-to-noise ratio, cutting out the electronic noise. The intrinsic limit in photon counting is the non-linearity, especially at high photon fluxes, due to dead time in the electronics. Direct detection by thick layers of high-Z semiconductors produces high detection efficiency and minimizes the loss of spatial resolution due to light scattering in scintillator-based systems. At equal sampling steps, direct detection systems may show, with respect to scintillator-based ones, better spatial resolution (Taguchi and Iwanczyk 2013). The first photon counting detectors developed for SR mammography were based on silicon microstrip sensors in edge-on geometry (Arfelli *et al* 1997, 1998, Longo *et al* 2003). When the silicon microstrip detectors were used in a commercial mammography unit, a significant reduction in the delivered dose was recorded, mainly in the examination of thick breast tissue (Åslund *et al* 2007, Weigel *et al* 2014). The dose reduction is based on the high detective quantum efficiency (DQE) of the system and on the higher energy spectra that can be used with the digital detector compared with the screen-film systems (Quai *et al* 2012). A new generation of photon-counting direct-conversion detectors are available, based on cadmium telluride (CdTe) (e.g. Chmeissani *et al* 2004). In contrast with Si microstrip detectors, which are 1D sensors (Arfelli *et al* 1997, Åslund *et al* 2007), the CdTe sensors are 2D pixel detectors, which are available with different tile-up capabilities (Taguchi and Iwanczyk 2013, Bellazzini *et al* 2013).

While high DQE can be instrumental in order to reduce the delivered dose in CT, it is not the only characteristic of the system that plays a crucial role: to this purpose, a number of techniques have been developed in both data acquisition protocol and in reconstruction algorithms. The filtered back projection (FBP) algorithm is one of the most popular algorithms for CT reconstruction; however, it is well known that it produces significant image artefacts when only a reduced number of projections are acquired. In fact, when the number of projections is significantly lower than the minimum number prescribed by the Nyquist radial sampling criteria, the tomographic reconstruction represents an ill-posed problem, and conventional reconstruction algorithms do not yield adequate results (Kak and Slaney 1988, Buzug 2008). Several approaches have been proposed to deal with this problem, including SIRT (simultaneous iterative reconstruction technique), SART (simultaneous algebraic reconstruction technique) (Gordon *et al* 1970), CGLS (conjugate gradient least square) (van der Sluis and van der Horst 1990), MLEM (maximum likelihood expectation maximization) (Dempster *et al* 1977), MR-FBP (minimum residual FBP) (Pelt and Batenburg 2014) and morphing techniques (Brunetti and Golosio 2001). Some of them have been applied to breast CT data, including iterative reconstruction algorithms with appropriate filters (Makeev and Glick 2013, Bian *et al* 2014) and the so-called equally slope tomography (EST), which combines an acquisition with a non-equally spaced angular sampling of projections with a Fourier reconstruction algorithm (Miao *et al* 2005, Zhao *et al* 2012).

The aim of the SYRMA-CT (SYnchrotron Radiation MAMmography-Computed Tomography) collaboration is to set-up the first clinical trial of PhC breast CT with SR at the SYRMEP (SYnchrotron Radiation for MEDical Physics) beamline of Elettra, the synchrotron radiation laboratory in Trieste (Italy). Pursuing both high image quality and low delivered

dose, a number of innovative elements will be merged: a novel CdTe single photon counting detector (PIXIRAD-8, Bellazzini *et al* 2013), state-of-the-art CT reconstruction techniques and a phase retrieval algorithm. In order to perform accurate exam optimization, a Monte Carlo model has been developed for dose calculation using the GEANT4 simulation toolkit (Agostinelli *et al* 2003). In this paper we present the key elements of the project and discuss the first images of a mammographic test object and of two breast tissue specimens.

2. Material and methods

2.1. The beamline and acquisition set-up

The images were acquired at the SYRMEP (SYnchrotron Radiation for Medical Physics) beamline at Elettra. The radiation source is one of the storage ring bending magnets; the beam is monochromatized by means of a Si(1 1 1) double-crystal monochromator, which provides a beam energy in the range 8.5 keV–38 keV, with a resolution of about 0.2%. Several tungsten slit systems are used to define the beam shape. The maximum beam cross section in the radiology hutch is 220 mm (horizontal) \times 5 mm (vertical, Gaussian shape, FWHM) (Abrami *et al* 2005). A dosimetric system, developed for clinical planar mammography (Castelli *et al* 2011), was upgraded for clinical tomography. The SYRMEP patient support was designed in order to allow mammography, by scanning the compressed breast in the vertical direction, and breast CT acquisition, by the rotation of the patient with the breast to be imaged hanging in a pendant geometry outside of an ergonomically designed aperture at the rotation centre (Pani *et al* 2004). The phase sensitive technique exploited in the clinical studies at the SYRMEP beamline is the so-called propagation-based phase-contrast and it is based on the high coherence of the SR beam and on the long propagation distance between patient and detector (\sim 2 m). Moreover, to detect the edge-enhancement effect associated to this PhC technique the spatial resolution of the detector has to be adequately high (Arfelli *et al* 1998), since no optical elements are present in the beam path and the interference pattern in the near field has to be very finely sampled in space.

The preliminary images reported in this paper were acquired in a simplified set-up using a rotation stage at the breast position in the radiology hutch. The beam energy was 38 keV: a good compromise between optimal energy for the CT of breast with SR and efficient response of the CdTe detector (Mittone *et al* 2014), within the energy range of the SYRMEP beamline. The projections were collected over 180 degrees, thanks to the negligible horizontal divergence of the beam (7 mrad), which permits acquisition in parallel beam geometry. The vertical beam dimension was 3 mm.

2.2. Dose evaluation

Due to the laminar shape of the SR beam, acquisition of a breast volume requires multiple rotations of the patient. The reduced breast volume under investigation will be selected during the exam initialization and it will be covered by collecting several CT axial scans at different adjacent vertical positions, in a rotate/translate scan geometry. Taking into account the available beam height and according to the diagnostic requirements, the number of slices will be defined in each exam: it is expected to be in the range 10–20 (3–6 cm axial length).

In a mammography exam, the calculation of the mean glandular dose (MGD) assumes that the whole breast is exposed to the x-rays (Hammerstein *et al* 1979) but, in the case of this work, only a partial breast irradiation will occur: an extension of the mean glandular dose metric has been defined for the present research program (Mettivier *et al* 2016). The glandular

absorbed dose in the irradiated volume (MGD_v) is defined as the average dose delivered to the glandular breast component in the irradiated CT slice. The MGD_v is calculated by multiplying the value of the air kerma at the breast position (scanner isocentre) with a conversion factor (function of breast size and glandular fraction) obtained from a Monte Carlo simulation developed for this study (Mettivier *et al* 2016) based on a GEANT4 code optimized for breast dosimetry (Fedon *et al* 2015).

The value of the air kerma was provided by the dosimetric system developed for the clinical mammography trial (Castelli *et al* 2011): two ionization chambers are placed 3 m upstream from the breast in the beam preparation hutch, just before the radiological room. These chambers have been calibrated in the range 18–38 keV by means of a Radcal ionization chamber (mod. 10X6-3CT, Radcal, Monrovia, CA, USA) connected with the dosimeter Accu-Pro (Radcal), placed at the scanner isocenter.

2.3. PIXIRAD and data pre-processing

In this project, a high-efficiency photon-counting direct-conversion x-ray imaging detector is used. The basic block has a hybrid architecture in which the sensor and readout electronics, based on an application-specific integrated circuit (ASIC), are manufactured and processed separately and then coupled with the flip-chip bump-bonding technique. The sensor (ACRORAD Co., Ltd.) is a Schottky type diode array with electron collection on the pixels, made of crystalline CdTe substrate with an area of $30.96\text{ mm} \times 24.98\text{ mm}$ and thickness 0.65 mm. The pixels are arranged on a honeycomb matrix with a pitch of $60\ \mu\text{m}$. The ASIC is a CMOS VLSI chip with an active area of $30.7\text{ mm} \times 24.8\text{ mm}$, organized on a honeycomb matrix of 512×476 pixels (Bellazzini *et al* 2013). Each pixel incorporates a hexagonal electrode (top metal layer) connected to a charge amplifier, which feeds two discriminators, and two 15-bit counters. Each counter can be written while the other is read. Using this feature it is possible to realize the so-called Dead Time Free modality where no events are lost over the acquisition time. To reduce unavoidable pixel-to-pixel DC offset variations on the discrimination level, an auto-zero or self-calibration circuit is implemented in each pixel. In this way a single global threshold per discriminator can be applied to the entire matrix (Bellazzini *et al* 2013). The detector is produced by PIXIRAD Imaging counters s.r.l. (Pisa, Italy), a spin-off company of INFN (the Italian National Institute for Nuclear Physics).

The multi-block module used in this project is an 8-unit system (PIXIRAD-8) reaching a global active area of $250\text{ mm} \times 25\text{ mm}$, therefore raw images have 4608×476 pixels (figure 1). Because of the modular structure of the device, a dead space ($60\ \mu\text{m}$ wide) between adjacent blocks is present. The system has been previously tested at the SYRMEP beamline in order to establish the energy resolution performance (Vincenzi *et al* 2015) and to verify the linearity at the photon rates that are expected during breast CT scans. The system has a linear response up to 2×10^5 photons per pixel per second.

All acquisitions were taken with an exposure time of 50 ms per projection and setting up a discriminator threshold value equivalent to half the energy of photons (i.e. 19 keV). This allows minimizing charge-sharing effects (double counts, loss of spatial resolution) avoiding loss of counts (Lopez *et al* 2014). The maximum flux on the detector during the data acquisition was $6 \cdot 10^4$ photons per pixel per second, far below the non-linear region.

Projection images were pre-processed in the following way:

- (a) Flat-field equalisation, to correct the residual pixel-to-pixel offset differences;
- (b) Resampling, to change from honeycomb to square sampling. This procedure, based on linear interpolation, produces raw images with $30\ \mu\text{m}$ pixel size;

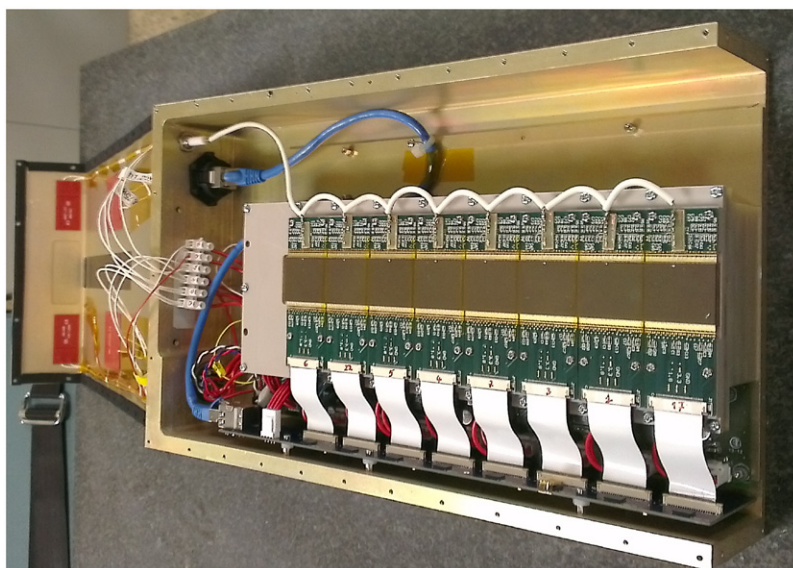


Figure 1. The PIXIRAD-8 unit: a 2 Megapixels, 4 Megacounters CdTe detector system, read-out at 30 frames s^{-1} .

- (c) Seaming, to bind adjacent blocks and close the dead space. This operation is also based on linear interpolation and involves three columns of pixels next to the edge of the block.

2.4. Image reconstruction

In this preliminary study, we used two reconstruction algorithms: a standard FBP algorithm and an iterative SART algorithm. FBP reconstruction on datasets with a relatively large number of projections was used as a gold standard to evaluate the performance of other reconstruction algorithms with a reduced number of projections and phase-retrieval pre-processing.

The SART algorithm has been successfully applied to a wide range of CT applications (Camerani *et al* 2004, Golosio *et al* 2004, Cauzid *et al* 2007); it is relatively fast compared to other iterative algorithms, and its convergence properties have been well studied (Kak and Slaney 1988). In the SART algorithm, the iterative corrections are made angle-by-angle, i.e. for each angular view, the corrections are evaluated and applied simultaneously to all rays of the projection. One iteration is considered to be completed when all the projections have been used. We used a random ordering for the projections in order to avoid systematic errors in the reconstruction. A few iterations are sufficient for the algorithm to converge. The reconstructions presented in this work were made using five iterations. The correction was multiplied by a relaxation factor, which grows linearly from zero to a maximum in the first few projections used by the reconstruction algorithm (the first 10 in this work) and decreases linearly from this maximum to zero when the number of projections increases. The relaxation factor suppresses residual oscillations, ensuring stability and convergence of the iteration (Golosio *et al* 2004). A bilateral filter was combined with the iterative reconstruction in order to improve image regularization. This type of filter takes two parameters: a spatial filter parameter, α_d , which controls the amount of smoothing differences in coordinates, and a range filter parameter α_r , which accounts for smoothing differences in intensities. In this work α_d is expressed in pixel

units, while α_r is expressed in cm^{-1} . The latter are the same units used for the linear absorption coefficient distribution obtained by the tomographic reconstruction algorithms. The optimization of the filtering was beyond the aim of this preliminary investigation.

In order to exploit the phase information carried out by the projections, a phase retrieval filter following the Homogeneous Transport of Intensity (TIE-Hom) Algorithm (Paganin *et al* 2002) was applied prior to the actual reconstruction, with a fixed value of the δ/β ratio, namely 2508. This value was extracted from a publicly available database (<https://ts-imaging.net/Services/Simple/ICUtilXdata.aspx>) for the adipose tissue at 38 keV. The projections obtained by applying the phase retrieval algorithm were normalized to the same average intensity as the projections without phase retrieval. The phase retrieval pre-processing were applied to the data sampled at $60 \mu\text{m}$ pixel size, even if the image was reconstructed with $120 \mu\text{m}$ pixel size, in order to maximize the effectiveness of the algorithm, which is based on edge-enhancement signals.

In the following sections, the image contrast (C) and the contrast-to-noise ratio (CNR) are evaluated according the following definition:

$$C = \frac{|S_1 - S_2|}{S_2} \quad (1)$$

$$\text{CNR} = \frac{|S_1 - S_2|}{\sqrt{\frac{\sigma_1^2 + \sigma_2^2}{2}}} \quad (2)$$

where S is the average voxel value in the selected region of interest (ROI) and σ^2 is the signal variance in the same region. The subscript numbers indicate the two ROI between which C and CNR were evaluated.

2.5. Samples and acquisition parameters

Images of a multi-slab mammographic test object (CIRS mammographic phantom BR50/50 model 014AD) were acquired and the slab including the details was aligned in the beam for the tomographic acquisition. Acquisition parameters were: air kerma rate 0.29 mGy s^{-1} , 720 projections equally spaced over 180 degree, 50 ms per projection. The pixel size of the reconstructed images is $60 \mu\text{m}$.

Two breast tissues (sample 1 and sample 2) containing cancer were studied. Both of them were fixed in formalin and sealed in a vacuum bag. The work reported in this paper was carried out following the Directive 2004/23/EC of the European Parliament and of the Council of 31 March 2004 on setting standards of quality and safety for the donation, procurement, testing, processing, preservation, storage and distribution of human tissues.

The images presented in this study were acquired in order to guide the pathologist in the localization of the lesions for the histological preparation, according to the standard procedures of the Pathology Unit of the Academic Hospital of Cattinara, Trieste University, accredited by JCI (Joint Commission International). The samples were prepared from specimens of breast lumpectomy and were derived from surgical material sent to the Pathology Unit according to local guidelines for histological examination.

Sample 1 contains an infiltrating ductal carcinoma, about 1.5 cm diameter. It is 8 mm thick and it was embedded in agar gel inside a plastic cup in order to obtain an object with dimension and attenuation comparable to that of a breast section. The diameter of the holder is about 9.4 cm. Acquisition parameters were: air kerma rate 0.52 mGy s^{-1} , 1200 projections equally

spaced over 180 degrees, 50 ms per projection, MGD_v equal to 23 mGy evaluated with a MC conversion factor $0.73 \text{ mGy mGy}^{-1}$.

Sample 2 contains a large (2.5 cm diameter) solid papillary carcinoma (poorly differentiated, G3 grade). Sample dimensions are about $89 \text{ mm} \times 36 \text{ mm}$, 5 mm thickness. Acquisition parameters were: air kerma rate 0.36 mGy s^{-1} , 1200 projections equally spaced over 180 degrees, 50 ms per projection, MGD_v equal to 17 mGy evaluated with a MC conversion factor $0.77 \text{ mGy mGy}^{-1}$.

3. Results

A detail of the mammographic phantom is presented in figure 2: it is a glandular-fat step-wedge and it is composed of two tissue-equivalent materials, i.e. glandular and fat tissue. The reconstruction in figure 2(a) was made using the FBP algorithm without phase retrieval, while the one in figure 2(b) was made using a Paganin filter on the tomographic projections after pre-processing and before the FBP reconstruction. Figures 2(c) and (d) show the signal intensity profiles of the step-wedge in the images (a) and (b), respectively. It can be observed that phase retrieval yields significant noise reduction. The CNR evaluated on the two tissue-equivalent materials was 0.23 for the reconstruction without phase retrieval, and 1.86 for the one with phase retrieval. The full width half maximum (FWHM) of the line spread function, which was evaluated through a fit of the edge profiles with the error function (erf), was $310 \mu\text{m}$ and $375 \mu\text{m}$, respectively. It is important to point out that, although the spatial resolution of the reconstruction without phase retrieval is (slightly) higher, it does not allow for recognition of very small details, because of the relevant noise level.

In principle it could be possible to reduce the noise level by applying a filter to the reconstructed image, at the cost of a reduction in spatial resolution. Figure 3 compares the FWHM as a function of the CNR for the reconstruction with phase retrieval and for that without phase retrieval, the latter one unfiltered ($\sigma = 0$) or filtered through a Gaussian filter with varying sigma. It can be observed that when the FWHM of the reconstruction without phase retrieval becomes comparable to that with phase retrieval, the corresponding CNR value is significantly lower.

Tomographic data sets were acquired from breast tissue specimens in order to perform a preliminary evaluation of PhC breast CT images of potential clinical interest. In figure 4, image reconstructions of sample 1 are presented. Figure 4(a) has been obtained with the FBP algorithm by using 1200 projections and a MGD_v of 23 mGy. The voxel of the reconstructed images is $(120 \mu\text{m})^3$, as a good compromise between spatial resolution and signal-to-noise ratio. The black details inside the object are air bubbles due to the folding of the plastic bag containing the sample; edge-enhancement effects are visible at the air-plastic foil interface. Figure 4(b) shows the FBP reconstruction of 300 projections, obtained by reducing the MGD_v (about 6 mGy) of a factor 4 with respect to figure 4(a). Figure 4(c) shows the same 300-projections data set reconstructed by means of SART ($\alpha_d = 4$ and $\alpha_r = 0.2$). The image in figure 4(d) was obtained by applying a phase retrieval filter prior to using the same SART algorithm used in figure 4(c). Images reconstructed using SART present lower noise and a preserved spatial resolution. In contrast to figures 4(a)–(c), in the phase retrieved image (figure 4(d)) the glandular tissue appears brighter than the agar gel surrounding the sample. As expected, the phase retrieved image does not show edge enhancement effects, but the noise is significantly reduced.

The conventional mammography of sample 1, before agar gel inclusion, is presented in figure 5 to show the fine parenchymal structures present in the sample. They are visible in

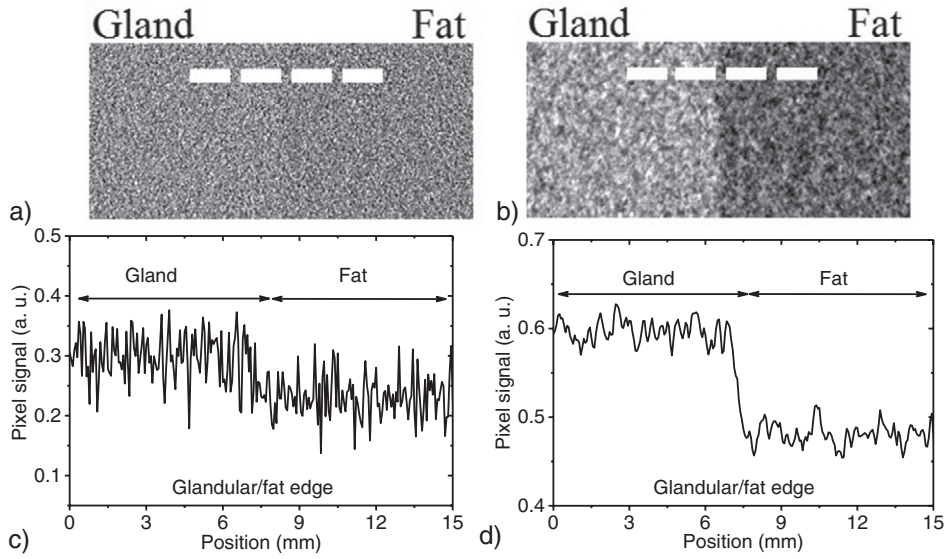


Figure 2. Glandular-fat step-wedge images (a) without phase retrieval and (b) with phase-retrieval extracted from slices with voxel size of $(60 \mu\text{m})^3$ reconstructed via FBP algorithm. Signal intensity profiles across the dashed lines (top images) (c) without phase-retrieval and (d) with phase-retrieval averaged over 100 adjacent rows.

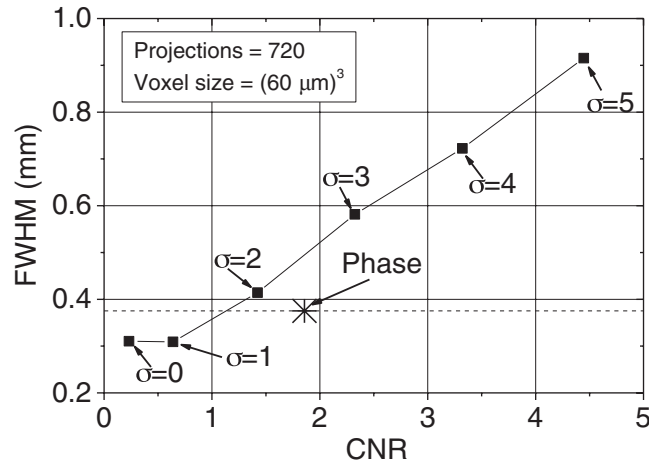


Figure 3. FWHM versus CNR with different Gaussian-filter widths applied to the reconstructed image without phase-retrieval compared to CNR and FWHM of the phase-retrieved slice (* symbol).

both digital mammography and CT images. However, in the latter, no overlapping features are present

Sample 2 was studied without inclusion in the agar-gel. The MGD_v was about 17 mGy for 1200 projection over 180 degrees. According to Zhao *et al* (2015), in clinical breast CT, even if the voxel size is smaller than 1 mm, the radiologist adjusts the slice thickness during the image evaluation according to the diagnostic requirements, up to about 2 mm. In order to evaluate the

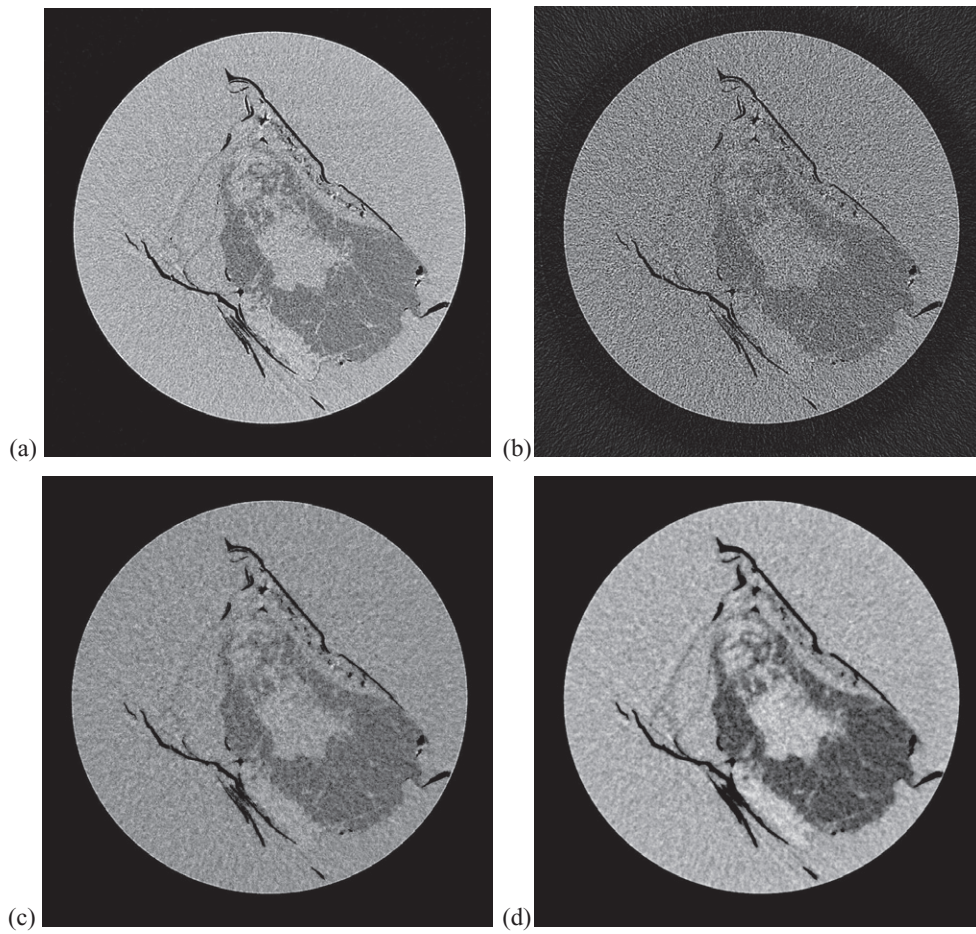


Figure 4. Sample 1 (diameter: 9.4cm). (a) FBP reconstruction of 1200 projections and (b) 300 projections, (c) SART reconstruction of 300 projections, (d) phase retrieved SART reconstruction of 300 projections.

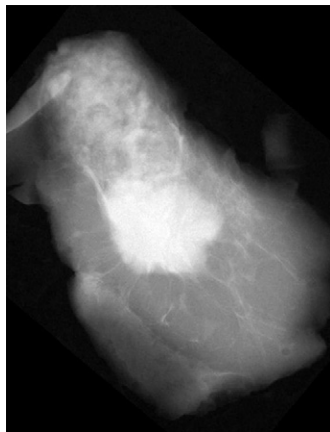


Figure 5. Digital mammography (planar image) of sample 1.

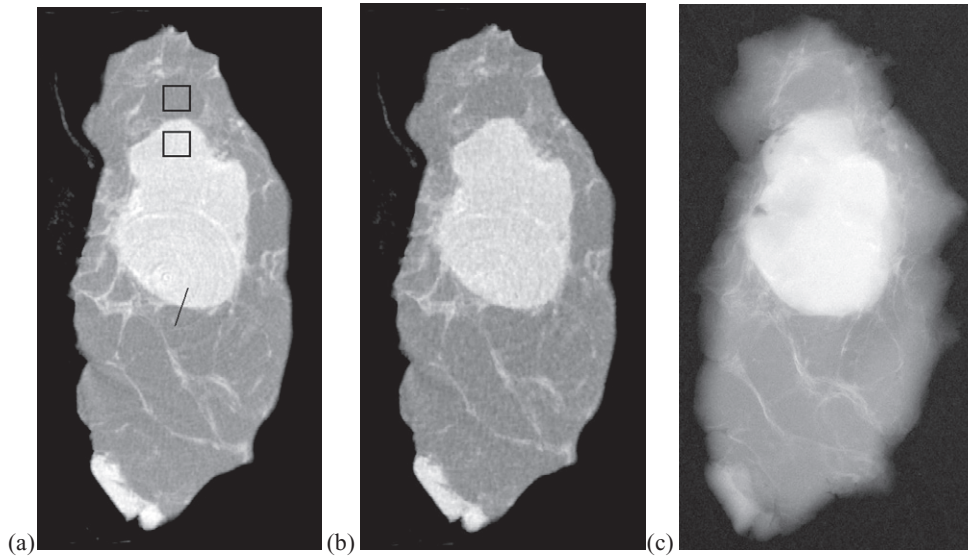


Figure 6. Images of 0.85 mm thick slices obtained (a) from FBP reconstruction of 1200 phase retrieved projections and (b) SART reconstruction of 300 phase retrieved projections ($\alpha_d = 2$ and $\alpha_r = 0.05$). (c) Planar image obtained from the 5 mm-thick sample at a clinical mammographic unit. In (a) the ROIs for CNR and C assessment are outlined together with the line over which the profiles in figure 7 are evaluated.

potential clinical application of our low-dose images, 0.84 mm thick slices were obtained by adding 7 images from the sample 2 data sets. In figure 6 the results are presented for the FBP reconstruction from 1200 phase-retrieved projections (a) and for a low dose reconstruction obtained by applying the SART technique on 300 phase retrieved projections (b) with a dose reduction of a factor 4 (MGD_v is 4.25 mGy). Ring artefacts are visible due to the gaps between the 8 sensors of the PIXIRAD-8 detector, which were not perfectly corrected by the seaming procedure in a couple of cases. Figure 6(c) shows the planar image of the specimen obtained at a clinical mammographic unit; the nodule thickness in the sample is not constant, therefore the contrast modulation inside the cancer in the mammographic image is due to its irregular shape and not to any density inhomogeneity of the nodule.

In order to quantify the effect of the dose reduction and the application of the iterative reconstruction, contrast and CNR values were calculated in figures 6(a) and (b). Moreover, the possible loss in spatial resolution, due to the reduction in projection in the SART image, has been investigated by measuring the signal profiles at the boundary of the lesion in both image reconstructions. In figure 6(a), the ROIs selected for the CNR and contrast evaluation are outlined. The contrast and the CNR for the FBP reconstruction with 1200 phase retrieved projections (figure 6(a)) are 0.28 and 18 respectively, while, for the SART reconstruction with 300 phase retrieved projections (figure 6(b)), $C = 0.29$ and $CNR = 13$, indicating that the contrast is constant while a reduction of 30% of CNR is observed with a dose sparing of 75%.

Figure 7 shows the signal intensity profiles of the images (evaluated across the line in figure 6(a)) for both the FBP reconstruction with 1200 phase retrieved projections (figure 6(a)) and for the SART reconstruction with 300 phase retrieved projections (figure 6(b)); they presented a FWHM of 420 μm and the results were quite similar. The FWHM measured

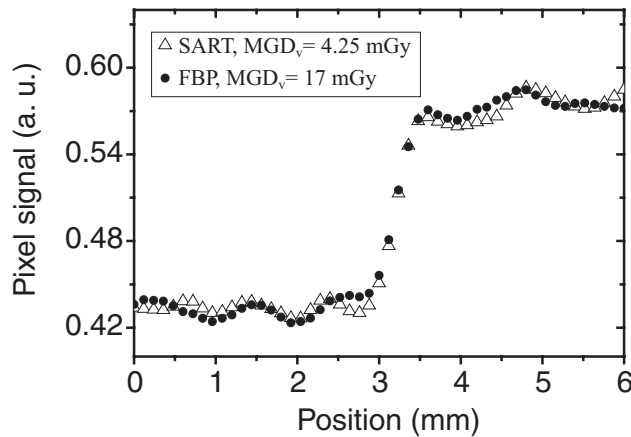


Figure 7. Profiles across the line in figure 6(a), obtained both with FBP reconstruction from 1200 projections and a MGD_v of 17 mGy and with SART algorithm ($\alpha_d = 2$ and $\alpha_r = 0.05$) from 300 projections and a MGD_v of 4.25 mGy. Voxel size = $(120 \mu\text{m})^3$.

here is slightly larger than the FWHM's measured from the glandular-fat step-wedge in figure 2, due to the larger voxel ($60 \mu\text{m}$ versus $120 \mu\text{m}$ voxel side) and the lack of a perfect edge in the biological sample.

These results suggest that the SART technique is a very promising candidate for the tomographic reconstruction of the SYRMA-CT images.

4. Discussion and conclusion

In this study, monoenergetic CT scans of objects with dimensions and attenuation similar to human breast were acquired, delivering MGD in the irradiated volume (MGD_v) in the range of MGD delivered in clinical breast CT (5–25 mGy) (Zhao *et al* 2015). Due to the spatial coherence of the SR beam and the long distance between sample and detector, the images contain additional phase information, which was exploited in the reconstruction process by applying a phase-retrieval procedure with an important improvement in the image quality. Our preliminary results show that, by applying the SART iterative reconstruction to a reduced number of projections (300), images can be obtained that present the same spatial resolution and a CNR decrease by 30% with reduction by a factor 4 of the absorbed dose, if compared to images reconstructed with 1200 projections and FBP.

The first images of the SYRMA-CT collaboration reported in this paper on a breast specimen of about 9 cm in diameter indicate that clinical PhC breast CT with SR is technically feasible. An uncompressed breast diameter of 9–10 cm at chest wall corresponds to a compressed breast thickness of about 2 cm, for which the MGD for two-view mammography is 1–2 mGy (Boone *et al* 2005). Hence, the minimum dose level (MDG_v about 4 mGy) attained in this study is only 2–4 times higher than that of a two-view mammography for a 2 cm compressed breast. Noticeably, a MGD about 7 times higher than that of a two-view mammography has been reported for a 2 cm compressed breast in a polychromatic cone-beam CT clinical prototype (Sechopoulos *et al* 2010).

A general optimization of the data processing is in progress. Several reconstruction algorithms are under evaluation, including SIRT, SART, CGLS, MLEM, MR-FBP. In order to

perform this optimization, a quantitative evaluation of image quality is required. This, however, is a challenging task, in particular in real-data studies in which the image may contain complex structures (Pacilè *et al* 2015). To take into account different aspects of image quality we are considering different parameters. Image-similarity metrics (Bian *et al* 2010) may be used to compare image differences in real-data studies, as long as a reference image is available. Visibility parameters, like the contrast-to-noise ratio (CNR) or the CNR normalized by the dose are also relevant (Gureyev *et al* 2014), if the signal and the background can be clearly identified in the image. Likewise, the evaluation of spatial resolution is a significant task to compare different acquisition and reconstruction techniques and will be taken into account. The PIXIRAD pixel pitch is 60 μm and the isotropic voxel size of the presented images of breast tissue samples is $(120 \mu\text{m})^3$; further investigations are necessary in order to define the best spatial resolution for clinical application, considering that a larger voxel size could be associated to a further reduction of the delivered dose. In the meantime, the upgrade of the beamline control and safety system has been carried on in order to move from planar mammography to breast CT. Moreover the medical protocol is under development.

Other research groups reported CT images of breast samples obtained with different phase contrast techniques. Grandl *et al* (2014) studied a breast sample with fibroadenoma using grating-based PhC tomography: the results were impressive in terms of tissues discrimination, but the acquisition time of the order of many hours and the small dimension of the sample (3 cm diameter) indicate that the technique is not ready for clinical application. Zhao *et al* (2012) published a CT study of a large breast sample (9.5 cm diameter) using analyser-based monochromatic imaging (also called diffraction enhanced imaging—DEI) and delivering glandular doses comparable with breast mammography (7 mGy using FBP, 2 mGy applying EST). In order to obtain such results the beam energy was increased up to 60 keV and the images were very different compared to absorption-based breast CT. The clinical application of analyser-based imaging is a matter of discussion. According to Faulconer *et al* (2009) it is necessary to develop an atlas of breast features to help with training radiologists on how to interpret the currently unfamiliar DEI images. From the technical point of view, the mechanical stability of the analyser set-up is very demanding, and must be assured within a few micro-radians in order to guarantee both image quality and delivered dose. To the best of our knowledge, there are no programs for clinical trials in DEI tomography.

In medical imaging clinical trials are fundamental to evaluate the possible role of a new imaging technique in diagnostic practice. The intended aim of the clinical trials at the SYRMEP beamline is to evaluate the image quality and the delivered dose achievable in PhC breast imaging with SR, keeping in mind the time and dose constraints that are typical of the clinical practice. This will give information about the PhC breast tomography and in particular about the possible contribution of the phase retrieval to the accuracy of the diagnosis. Once these findings have been clearly established, they can set the basis for the translational research in PhC breast imaging, trying to preserve the relevant characteristics of SR while moving to more compact sources and finally towards the radiology departments of the hospitals.

Acknowledgments

The authors thank Dr Maura Tonutti and Professor M Cova for the useful discussions. The SYRMA-CT project is supported by Istituto Nazionale di Fisica Nucleare (National Scientific Committee 5 for Technological and inter-disciplinary research) and Elettra-Sincrotrone Trieste SCpA. The grant from the Fondazione CR Trieste enabled the set up of an offsite breast imaging centre at the SYRMEP beam line.

References

- Abrami A *et al* 2005 Medical applications of synchrotron radiation at the SYRMEP beamline of ELETTRA *Nucl. Instrum. Methods A* **548** 221–7
- Agostinelli S *et al* 2003 Geant4—a simulation toolkit *Nucl. Instrum. Methods A* **506** 250–303
- Arfelli F *et al* 1997 A linear array silicon pixel detector: images of a mammographic test object and evaluation of delivered doses *Phys. Med. Biol.* **43** 1565–73
- Arfelli F *et al* 1998 Low-dose phase contrast x-ray medical imaging *Phys. Med. Biol.* **43** 2845–52
- Åslund M, Cederström B, Lundqvist M and Danielsson M 2007 Physical characterization of a scanning photon counting digital mammography system on Si-strip detectors *Med. Phys.* **34** 1918–25
- Bellazzini R, Spandre G, Brez A, Minuti M, Pinchera M and Mozzo P 2013 Chromatic x-ray imaging with a fine pitch CdTe sensor coupled to a large area photon counting pixel ASIC *J. Instrum.* **8** C02028
- Beltran M A, Paganin D M, Siu K K, Fouras A, Hooper S B, Reser D H and Kitchen M J 2011 Interface-specific x-ray phase retrieval tomography of complex biological organs *Phys. Med. Biol.* **56** 7353–69
- Bian J, Siewerdsen J H, Han X, Sidky E Y, Prince J L, Pelizzari C A and Pan X 2010 Evaluation of sparse-view reconstruction from flat-panel-detector cone-beam CT *Phys. Med. Biol.* **55** 6575–99
- Bian J, Yang K, Boone J M, Han X, Sidky E Y and Pan X 2014 Investigation of iterative image reconstruction in low-dose breast CT *Phys. Med. Biol.* **59** 2659–85
- Boone J M, Kwan A L C, Seibert J A, Sha N and Lindfors K K 2005 Technique factors and their relationship to radiation dose in pendant geometry breast CT *Med. Phys.* **32** 3767–76
- Bravin A, Coan P and Suortti P 2013 X-ray phase-contrast imaging: from pre-clinical applications towards clinics *Phys. Med. Biol.* **58** R1–35
- Brun E, Grandl S, Sztrókay-Gaul A, Barbone G, Mittone A, Gasilov S, Bravin A and Coan P 2014 Breast tumor segmentation in high resolution x-ray phase contrast analyzer based computed tomography *Med. Phys.* **41** 111902–9
- Brunetti E and Golosio B 2001 A new algorithm for computer tomographic reconstruction from partial view projections *Med. Phys.* **28** 462–68
- Buzug T 2008 *Computed Tomography: from Photon Statistics to Modern Cone-Beam CT* (New York: Springer)
- Camerani M C, Golosio B, Somogyi A, Simionovici A S, Steenari B M and Panas E 2004 X-ray fluorescence tomography of individual municipal solid waste and biomass fly ash particles *Anal. Chem.* **76** 1568–95
- Castelli E *et al* 2011 Mammography with synchrotron radiation: first clinical experience with phase-detection technique *Radiology* **250** 684–94
- Cauzid J, Philippot P, Bleuet P, Simionovici A, Somogyi A and Golosio B 2007 3D imaging of vapour and liquid inclusions from the Mole Granite, Australia, using helical fluorescence tomography *Spectrochim. Acta B* **62** 799–806
- Chen R C, Rigon L and Longo R 2013 Comparison of single distance phase retrieval algorithms by considering different object composition and the effect of statistical and structural noise *Opt. Express* **21** 7384–99
- Chmeissani M *et al* 2004 First experimental tests with a CdTe photon counting pixel detector hybridized with a Medipix2 readout chip *IEEE Trans. Nucl. Sci.* **51** 2379–85
- Cloetens P, Ludwig W, Baruchel J, Van Dyck D, Van Landuyt J, Guigay J P and Schlenker M 1999 Holotomography: quantitative phase tomography with micrometer resolution using hard synchrotron radiation x rays *Appl. Phys. Lett.* **75** 2912–4
- Coan P, Bravin A and Tromba G 2013 Phase-contrast x-ray imaging of the breast: recent developments towards clinics *J. Phys. D: Appl. Phys.* **46** e494007
- Dempster A P, Laird N M and Rubin D B 1977 Maximum likelihood from incomplete data via the em algorithm *J. R. Stat. Soc. Ser. B* **39** 1–38 (www.jstor.org/stable/2984875)
- Faulconer L *et al* 2009 Radiologist evaluation of an x-ray tube-based diffraction-enhanced imaging prototype using full-thickness breast specimens *Acad. Radiol.* **16** 1329–37
- Fedon C, Longo F, Mettivier G and Longo R 2015 GEANT4 for breast dosimetry: parameters optimization study *Phys. Med. Biol.* **60** N311–23
- Grandl S *et al* 2014 Visualizing typical features of breast fibroadenomas using phase-contrast CT: an *ex-vivo* study *Plos One* **9** e97101

- Golosio B, Brunetti A and Cesareo R 2004 Algorithmic techniques for quantitative Compton tomography *Nucl. Instrum. Methods B* **213** 108–11
- Gordon R, Bender R and Herman G T 1970 Algebraic reconstruction techniques (ART) for three-dimensional electron microscopy and x-ray photography *J. Theor. Biol.* **29** 471–81
- Gureyev T E *et al* 2014 Investigation of imaging quality of synchrotron-based phase-contrast mammographic tomography *J. Phys. D: Appl. Phys.* **47** 365401
- Hammerstein G R, Miller D W, White D R, Masterson M E, Woodard H Q and Laughlin J S 1979 Absorbed radiation close in mammography *Radiology* **130** 485–91
- Kak A C and Slaney M 1988 *Principles of Computerized Tomographic Imaging* (New York: IEEE)
- Kalender W A, Beister M, Boone J M, Kolditz D, Vollmar S V and Weigel M C C 2012 High-resolution spiral CT of the breast at very low dose: concept and feasibility consideration *Eur. Radiol.* **22** 1–8
- Longo R *et al* 2003 Morphological breast imaging: tomography and digital mammography with synchrotron radiation *Nucl. Instrum. Methods A* **497** 9–13
- Longo R *et al* 2014 Clinical study in phase-contrast mammography: image-quality analysis *Phil. Trans. R. Soc.* **372** 20130025
- Lopez F C, Rigon L, Fardin L, Arfelli F, Bergamaschi A, Dreossi D, Longo M, Schmitt B, Vallazza E and Longo R 2014 Comparator threshold settings and the effective pixel width of the PICASSO detector *JINST* **9** C05056
- Makeev A and Glick S J 2013 Investigation of statistical iterative reconstruction for dedicated breast CT *Med. Phys.* **40** 081904
- Mettivier G, Fedon C, Di Lillo F, Longo R, Sarno A, Tromba G and Russo P 2016 Glandular dose in breast computed tomography with synchrotron radiation *Phys. Med. Biol.* **61** 569–87
- Miao J, Förster F and Levi O 2005 Equally sloped tomography with oversampling reconstruction *Phys. Rev. B* **72** 052103
- Mittone A, Bravin A and Coan P 2014 Radiation dose in breast CT imaging with monochromatic x-rays: simulation study of the influence of energy, composition and thickness *Phys. Med. Biol.* **59** 2199–217
- Nesterets Y I and Gureyev T E 2014 Noise propagation in x-ray phase-contrast imaging and computed tomography *J. Phys. D: Appl. Phys.* **47** 105402
- Nesterets Y I *et al* 2015 A feasibility study of x-ray phase-contrast mammographic tomography at the imaging and medical beamline of the Australian synchrotron *J. Synchrotron Radiat.* **22** 1509–23
- O’Connell A M, Karellas A and Vedantham S 2014 The potential role of dedicated 3D breast CT as a diagnostic tool: review and early clinical examples *Breast J.* **20** 592–605
- Pacilè S *et al* 2015 X-ray phase-contrast imaging: from pre-clinical applications towards clinics *Biomed. Opt. Express* **6** 3099
- Paganin D, Mayo S C, Gureyev T E, Miller P R and Wilkins S W 2002 Simultaneous phase and amplitude extraction from a single defocused image of a homogeneous object *J. Microsc.* **206** 33–40
- Pani S *et al* 2004 Breast tomography with synchrotron radiation: preliminary results *Phys. Med. Biol.* **49** 1739–54
- Pelt D M and Batenburg K J 2014 Improving filtered backprojection reconstruction by data-dependent filtering *IEEE Trans. Image Process.* **23** 4750–62
- Prionas N D, Lindfors K K, Ray S, Huang S Y, Beckett L A, Monsky W L and Boone J M 2010 Contrast-enhanced dedicated breast CT: initial clinical experience *Radiology* **256** 714–23
- Quai E *et al* 2012 First application of computed radiology to mammography with synchrotron radiation *Radiol. Med.* **118** 89–100
- Sarno A, Mettivier G and Russo P 2015 Dedicated breast computed tomography *Med. Phys.* **42** 2786–804
- Sechopoulos I, Feng S S J and D’Orsi C J 2010 Dosimetric characterization of a dedicated breast computed tomography clinical prototype *Med. Phys.* **37** 4110–20
- Sechopoulos I 2013a A review of breast tomosynthesis. Part I. The image acquisition process *Med. Phys.* **40** 014301–12
- Sechopoulos I 2013b A review of breast tomosynthesis. Part II. Image reconstruction, processing and analysis, and advanced applications *Med. Phys.* **40** 014302–17
- Taguchi K and Iwanczyk J S 2013 Vision 20/20: single photon counting x-ray detectors in medical imaging *Med. Phys.* **40** 100901–19
- Tanaka T *et al* 2005 The first trial of phase contrast imaging for digital full-field mammography using a practical molybdenum x-ray tube *Invest. Radiol.* **40** 385–96
- van der Sluis A and van der Horst H A 1990 SIRT and CG-type methods for the iterative solution of sparse linear least-squares problems *Linear Algebra Appl.* **130** 257–302

- Vincenzi A, De Ruvo P L, Delogu P, Bellazzini R, Brez A, Minuti M, Pinchera M and Spandre G 2015 Energy characterization of Pixirad-1 photon counting detector system *J. Instrum.* **10** C04010
- Vedantham S, Shi L, Karellas A, O'Connell A M and Conover D L 2013 Personalized estimates of radiation dose from dedicated breast CT in a diagnostic population and comparison with diagnostic mammography *Phys. Med. Biol.* **58** 7921–36
- Weigel S, Berkemeyer S, Girnus R, Sommer A, Lenzen H and Heindel W 2014 Digital mammography screening with photon-counting technique: can a high diagnostic performance be realized at low mean glandular dose? *Radiology* **271** 345–55
- Zhao B, Zhang X, Cai W, Conover D and Ning R 2015 Cone beam breast CT with multiplanar and three dimensional visualization in differentiating breast masses compared with mammography *Eur. J. Radiol.* **84** 48–53
- Zhao Y *et al* 2012 High resolution, low dose phase contrast x-ray tomography for 3D diagnosis of human breast cancers *Proc. Natl Acad. Sci. USA* **109** 18290–94