



Cite this: *J. Anal. At. Spectrom.*, 2015, 30, 1322

Lead isotopic analysis of Antarctic snow using multi-collector ICP-mass spectrometry

Andrea Bazzano,^{ab} Kris Latruwe,^b Marco Grotti^a and Frank Vanhaecke^{*b}

Reliable determination of Pb isotope ratios in Antarctic snow is challenging because of the low analyte concentration and the low volume of sample typically available. In this work, a combination of a total sample consumption introduction system (the torch-integrated sample introduction system, TISIS) with multi-collector ICP-mass spectrometry (MC-ICP-MS) was used for this purpose. With this instrumental setup, accurate and precise determination of Pb isotope ratios was possible at concentrations as low as 0.5 ng mL⁻¹, while using 0.2 mL of solution only (total amount of Pb: 100 pg). At 10 ng mL⁻¹, the repeatability for the ²⁰⁷Pb/²⁰⁶Pb ratio was 0.16% RSD. The concentration range was further extended downwards by using 100-fold analyte element preconcentration *via* freeze-drying of 20 g of snow. The Pb concentration in procedural blanks was 0.5 ± 0.3 pg g⁻¹, enabling the determination of Pb isotope ratios in snow samples containing down to 5 pg g⁻¹ of Pb. After development and validation, the procedure was applied to snow samples collected at Dome C (East Antarctic Plateau) on a monthly basis during the 2006 and 2010 campaigns. The method developed was able to reveal a seasonal variation in the Pb isotope ratios occurring during 2006 and strong inter-annual variation between the two campaigns.

Received 18th December 2014
Accepted 20th February 2015

DOI: 10.1039/c4ja00484a

www.rsc.org/jaas

1. Introduction

The determination of Pb isotope ratios in the Antarctic and Greenland snow and ice caps can provide valuable information on the geographical sources of both natural and anthropogenic atmospheric inputs, the relative contributions of these sources over time and the corresponding transport routes.^{1–3} The accurate measurement of these isotope ratios can, however, be quite challenging. Indeed, the Pb concentration in polar snow and ice is extremely low, typically at or below the pg g⁻¹ level,⁴ therefore requiring the application of ultraclean procedures for sampling, sample storage and treatment, as well as very high instrument sensitivities.

Isotope dilution-thermal ionisation mass spectrometry (ID-TIMS) is capable of the simultaneous determination of the concentration of Pb and its isotopic composition and therefore appears to be the method of choice for the analysis of snow and ice samples of limited size.^{5,6} Multi-collector inductively coupled plasma-mass spectrometry (MC-ICP-MS) can be considered a strong competitor of TIMS for many applications,⁷ but so far, it has not been employed for the determination of Pb isotope ratios in snow samples from polar areas. For achieving an adequate isotope ratio precision, a relatively high target element concentration is required due to the low analyte transport efficiency

from the sample solution to the detectors and the modest sensitivity of the Faraday cups used for ion monitoring. For many sample types, this problem can be circumvented *via* an analyte pre-concentration step, but this approach requires relatively large sample amounts, thus reducing the spatial/temporal resolution of the information provided in the specific case of Pb isotopic analysis of snow samples. A way to increase the instrumental sensitivity, while adhering to a low sample consumption, is the use of a so-called “total consumption” sample introduction system. Among these total consumption devices, the torch-integrated sample introduction system (TISIS)^{8,9} was already proven capable of efficient introduction of microsamples into an ICP source, in both atomic emission (ICP-AES)^{10,11} and mass spectrometry (ICP-MS).^{12,13} In its final design, the TISIS consists of a single-pass high-temperature evaporation chamber, with a lateral port to introduce a sheathing gas stream, in a location close to the aerosol production point. In this way, the aerosol solvent evaporation was enhanced and the impact of droplets against the cavity walls reduced.

Paredes *et al.* investigated the performance of a TISIS coupled with MC-ICP-MS for the determination of Pb¹⁴ and Sr^{15,16} isotope ratios. Accurate data were obtained at a very low sample uptake rate (5–30 μL min⁻¹) and at a total sample consumption of less than 0.3 mL of solution. However, in these works, relatively high element concentrations were considered, resulting in a signal strength of about 1 V for the most abundant isotope monitored. The low concentration levels of Pb in snow from remote areas brings us far away from these ideal conditions.

^aDepartment of Chemistry and Industrial Chemistry, University of Genoa, Via Dodecaneso 31, 16146 Genoa, Italy

^bDepartment of Analytical Chemistry, Ghent University, Krijgslaan 281-S12, 9000 Ghent, Belgium. E-mail: Frank.Vanhaecke@UGent.be



In this work, snow samples were first submitted to analyte pre-concentration, based on sample volume reduction by freeze-drying.¹⁷ The solutions thus obtained were introduced into an MC-ICP-MS instrument for Pb isotopic analysis using a TISIS. This analytical protocol was optimised, characterised in terms of precision and accuracy at ultra-trace concentration level, and, finally, applied to the analysis of recent snow collected from Antarctica during two year-round expeditions.

2. Materials and methods

All solutions were prepared with ultrapure water (resistivity ≥ 18.2 M Ω cm), obtained from a Milli-Q Element water purification system (Millipore, Molsheim, France). Suprapur® 65% HNO₃ from Merck (Darmstadt, Germany) was used for the cleaning of materials, while Trace Select® Ultra 65% HNO₃ from Sigma-Aldrich (St. Louis, MO, USA) was used for the final stage of the cleaning procedure. Optima™ HNO₃ from Fisher Chemicals (Waltham, MA, USA) was used for the preparation of standards and samples.

All work, except for the pre-concentration procedure, was carried out in a metal-free class-10 clean lab facility at Ghent University. The pre-concentration procedure was accomplished in a class-100 laminar flow area at the University of Genoa.

2.1. Standard reference materials

Isotopic reference materials for Pb (NIST SRM 981) and Tl (NIST SRM 997), acquired from the National Institute for Standards

and technology (NIST, Gaithersburg, MD, USA), were used for correction for the bias introduced by instrumental mass discrimination. A solution containing 10 ng mL⁻¹ of both elements in 0.05% ultrapure HNO₃ matrix was prepared for that purpose. The values used for the mass bias correction were $^{207}\text{Pb}/^{206}\text{Pb} = 0.91464 \pm 0.00033$; $^{208}\text{Pb}/^{206}\text{Pb} = 2.1681 \pm 0.0008$; $^{208}\text{Pb}/^{207}\text{Pb} = 2.3704 \pm 0.00049$ and $^{203}\text{Tl}/^{205}\text{Tl} = 0.418922 \pm 0.00028$, as reported on the certificates released by NIST.

A 10 ng mL⁻¹ in-house isotopic standard was prepared by serial dilution of a commercially available 1 mg mL⁻¹ stock solution (Inorganic Ventures, Christiansburg, VA, USA; lot G2-PB03044) and is further referred to as "A&MS-Pb". Lead isotope ratios for this solution are $^{207}\text{Pb}/^{206}\text{Pb} = 0.90413 \pm 0.00002$, $^{208}\text{Pb}/^{206}\text{Pb} = 2.15331 \pm 0.00003$ and $^{208}\text{Pb}/^{207}\text{Pb} = 2.38167 \pm 0.00003$ (average \pm 95% confidence interval; $n = 15$; determined at 100 ng Pb mL⁻¹ using a conventional sample introduction system working at sample uptake rate of 200 $\mu\text{L min}^{-1}$).

2.2. Instrumentation and measurements

Lead isotope ratios were measured using a Thermo Scientific (Bremen, Germany) Neptune MC-ICP-MS instrument, operating at low mass resolution. The solutions were introduced into the plasma by means of a PFA nebuliser, operating in self-aspiration mode at a flow rate of 20 $\mu\text{L min}^{-1}$, mounted onto the TISIS chamber. The system required 0.2 mL of solution for each analysis. The instrument settings and data acquisition parameters are summarized in Table 1.

Table 1 Thermo Scientific Neptune instrument settings and data acquisition parameters

Instrumental parameters	
Sample uptake rate ($\mu\text{L min}^{-1}$)	20
Plasma gas flow rate (L min^{-1})	15
Auxiliary gas flow rate (L min^{-1})	0.90
Nebuliser gas flow rate (L min^{-1})	0.72
Sheating gas flow rate (L min^{-1}) ^a	0.35
Temperature of the chamber ($^{\circ}\text{C}$) ^a	150
RF power (W)	1200
Sampling cone	Ni; 1.1 mm \varnothing orifice
Skimmer	Ni; H-type; 0.8 mm \varnothing orifice
Lens settings	Optimised for maximum Pb signal intensity
Resolution mode	Low
Data acquisition parameters	
Scan type	Static; multi-collection
Number of blocks	7
Number of cycles/block	6
Integration time (s)	8.4
Magnet settling time (s)	0
Idle time (s)	3
Cup configuration ^b	L3: ^{202}Hg ; L2: ^{203}Tl ; L1: ^{204}Pb , ^{204}Hg ; C: ^{205}Tl ; H1: ^{206}Pb ; H2: ^{207}Pb ; H3: ^{208}Pb
Resistivity of the pre-amplifier	C, L1, L2, L3: 10^{11} Ω ; H1, H2, H3: 10^{12} Ω

^a Parameters of the TISIS chamber. ^b As a result of the low isotopic abundance of ^{204}Pb and the spectral overlap from ^{204}Hg , Pb isotope ratios including this Pb nuclide were not considered.



All sample and standard solutions were prepared in 0.05% ultrapure HNO_3 doped with 10 ng mL^{-1} of Tl (NIST SRM 997) and the correction for the bias introduced by instrumental mass discrimination was performed offline using the method proposed by Woodhead *et al.*¹⁸ and further refined by Baxter *et al.*¹⁹ With this method, a regression line in ln–ln space is determined by measuring both the isotope ratio for Tl (NIST SRM 997) and that selected for Pb (NIST SRM 981) in a series of standard solutions. Based on the regression line thus obtained and the Tl isotope ratio measured for NIST SRM 997 Tl, admixed to the sample, the mass bias is corrected for.

The A&MS-Pb solution was analysed as a quality control sample every five samples, whereas a full procedural blank was analysed for every analytical batch.

2.3. Sample collection and analysis

Antarctic snow samples were collected with a monthly resolution at Dome C (East Antarctic Plateau) during the 2006 and 2010 campaigns. In order to prevent contamination during sampling, the scientists taking the samples wore a clean room suit and approached the sampling site upwind. The samples were collected in acid-cleaned 50 mL PP graduated tubes (Kartell, Milan, Italy), sealed inside double polyethylene bags and stored at -20°C until analysis. Following a previously developed procedure,²⁰ samples were first allowed to melt in their closed tubes. Subsequently, 20 g aliquots were transferred into acid-cleaned 50 mL PP graduated tubes, acidified with 100 μL of HNO_3 and refrozen. Then, the samples were freeze-dried, redissolved in 0.2 mL of 0.05% HNO_3 solution containing 10 ng mL^{-1} of Tl (NIST SRM 997) and analysed using MC-ICP-MS.

3. Results and discussion

3.1. Sensitivity and stability of the signal

Instrumental sensitivity strongly depended on the combination of both nebuliser and sheathing gas flow rate, resulting in a behaviour similar to that described earlier for different instrument set-ups.^{12,15} Under optimum conditions, 10 ng mL^{-1} of Pb (NIST SRM 981) gave rise to a signal of about 0.4 V for ^{208}Pb with a variation $<2\%$ RSD over a period of more than six hours of analysis.

The signal produced by the reagents blank (0.05% of ultrapure HNO_3) was about 10^{-5} V for ^{208}Pb and was stable during approximately six hours of analysis. After this period of time, signal spikes usually started to appear, necessitating the analysis to be stopped. In such an event, the TISIS chamber was thoroughly cleaned by immersion in a bath of hot HNO_3 (about 10% v/v) for several hours. This phenomenon was already described by Paredes *et al.*¹⁴ and is likely due to the re-nebulisation of dry analyte particles from the nebuliser tip and the spray chamber walls.

3.2. Precision and repeatability

Precision is an important parameter for all analytical methods dealing with the measurement of isotope ratios, since it directly influences the uncertainties associated to each value, and thus,

the capability to obtain a meaningful interpretation of the results.

The repeatability or internal precision (RSD for 42 successive measurements) was studied in a concentration range from 0.5 to 10 ng mL^{-1} of Pb (NIST SRM 981), equivalent to a total Pb amount from 0.1 to 2 ng. In Fig. 1, the RSD for the $^{207}\text{Pb}/^{206}\text{Pb}$ ratio is reported, showing values below 1.5‰ in the entire concentration range studied. At 10 ng mL^{-1} of Pb, the RSD was $0.16 \pm 0.03\%$ (average \pm 95% confidence interval). This value is more than an order of magnitude better than that reported using the same sample introduction system, but using a quadrupole-based ICP-MS instrument with ammonia as a damping gas for smoothing the fluctuations of the ion beam intensity for Pb isotope ratio measurements.¹⁷

The intermediate or external precision was assessed by measuring the $^{207}\text{Pb}/^{206}\text{Pb}$ ratio in a solution with 10 ng mL^{-1} of Pb (NIST SRM 981) over a period of more than three months and was 0.11‰ (0.91465 ± 0.00005 , $n = 73$) when expressed as twice the relative standard deviation of the ratios (not the standard error of the mean). This result is very similar to that obtained by Cocherie *et al.*,²¹ who reported a value of 0.1‰ using a similar MC-ICP-MS instrument and a sample uptake rate of $50 \mu\text{L min}^{-1}$. Similar values have also been reported by Kuritani *et al.*²² (0.13‰) and Amelin *et al.*²³ (0.07‰) for isotopic analysis of absolute amounts of Pb of 1 and 2 ng by TIMS and double-spike TIMS, respectively. On the other hand, Makishima *et al.*²⁴ reported a reproducibility down to 0.03‰ in the isotopic analysis of 1 ng of Pb at a sample uptake rate of $50 \mu\text{L min}^{-1}$ (0.2 mL total sample consumption) when using an Aridus II aerosol desolvation system and a Neptune MC-ICP-MS instrument equipped with a Jet-type skimmer cone (also termed X-type), characterised by enhanced transport efficiency. Finally, Thirlwall²⁵ reported an external precision of 0.06–0.18 ‰ (2 SD) for isotopic analysis of ~ 7 ng of Pb using double-spike MC-ICP-MS and the Aridus desolvation system.

When reducing the Pb concentration to 0.5 ng mL^{-1} , the intermediate precision deteriorated to 0.31‰ (0.91438 ± 0.00028 , $n = 3$) for the $^{207}\text{Pb}/^{206}\text{Pb}$ ratio.

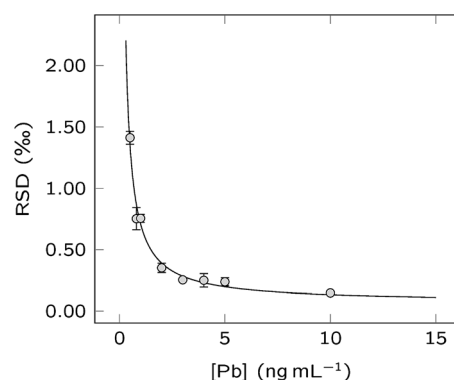


Fig. 1 Variation of the $^{207}\text{Pb}/^{206}\text{Pb}$ isotope ratio repeatability (internal precision) with the Pb concentration. The solid line is the best-fitting curve through the experimental data and the error bars represent the standard deviation of the average repeatability ($n = 3$).



3.3. Validation of the measurement results

The validity of the Pb isotope ratios determined *via* the newly developed method was evaluated by analysing the in-house A&MS-Pb standard, previously characterized using the standard MC-ICP-MS procedure. The average biases and their accompanying 95% confidence intervals for $^{207}\text{Pb}/^{206}\text{Pb}$ measurement were $0.06 \pm 0.03\%$ ($n = 25$) and $0.25 \pm 0.08\%$ ($n = 3$) at 10 and 0.5 ng mL^{-1} , respectively. The reported biases are within the range defined by the intermediate precision calculated in the previous section, thus the method provides accurate lead isotope ratios over the range of Pb concentration from 0.5 to 10 ng mL^{-1} .

3.4. Procedural blanks

The instrumental performance reported on so far deemed suitable for the accurate determination of $^{207}\text{Pb}/^{206}\text{Pb}$, $^{208}\text{Pb}/^{206}\text{Pb}$ and $^{208}\text{Pb}/^{207}\text{Pb}$ ratios at concentration levels from 0.5 to 10 ng mL^{-1} , using 0.2 mL of solution only and therefore, requiring 0.1 to 2 ng of total Pb only. In order to further decrease the lowest concentration feasible, a simple pre-concentration procedure relying on freeze-drying was used for sample pre-treatment. The corresponding blank contribution was estimated on the basis of 5 synthetic samples, obtained by pouring 20 g of ultrapure water (the same mass as for the snow samples) in acid-cleaned tubes that were subsequently submitted to the entire analytical procedure.

The Pb concentration was estimated by comparing the Pb intensity observed for the blanks to that of the closest standards (NIST SRM 981 at 10 ng mL^{-1}), resulting in a concentration of $0.5 \pm 0.3 \text{ pg g}^{-1}$ (or an absolute amount of $10 \pm 6 \text{ pg Pb}$) and a Pb isotopic composition characterized by $^{207}\text{Pb}/^{206}\text{Pb} = 0.868 \pm 0.008$ and $^{208}\text{Pb}/^{206}\text{Pb} = 2.103 \pm 0.020$. Taking these results into account, the blank can induce variations in the isotopic composition ranging from 0.1 to 0.2% in snow samples with a Pb concentration of 5 pg g^{-1} , the lowest Pb concentration encountered in the snow samples analyzed. A bias of this magnitude is relatively small compared to the natural variation in the isotopic composition of Pb as measured in Antarctic snow and ice.^{2,26}

3.5. Uncertainty estimation

In order to discriminate different isotope ratios and hence, apply the results of isotopic analysis to environmental

studies, a realistic estimation of the uncertainty is needed. The total uncertainty was calculated by combining the different single contributions, according to the GUM guidelines.²⁷ The contributions considered are related to (i) the instrumental precision in measuring the Pb isotope ratios in the samples (r_x), (ii) the precision in measuring the Tl isotope ratio (r_s), (iii) the error associated to the reference values for NIST SRM 981 (R_c), and (iv) the error due to the blank subtraction (r_b).

The relative contributions for the first three effects were estimated and propagated according to eqn (1), previously reported by Baxter *et al.*,¹⁹ and based on the assumption that the input quantities are not correlated

$$\frac{u_c^2(R_{x,\text{corr}})}{R_{x,\text{corr}}^2} = \frac{s_m^2(r_x)}{r_x^2} + \frac{s_m^2(r_s)}{r_s^2} b^2 + s_m^2(b) \left[\ln\left(\frac{r_s}{\rho_{s,\text{SRM}}}\right) \right]^2 + \frac{s_m^2(R_c)}{R_c^2} \quad (1)$$

here b is the estimated slope of the regression line used for the mass-bias correction, ρ denotes the means of the uncorrected ratios for the analyte and $s_m^2(r_i)$ is the standard error of the mean for a generic ratio r_i measured within the blocks. Due to the low influence of $s_m^2(b)$ (<1% of the total uncertainty budget), it was merged with $s_m^2(r_s)$.

The relative contribution from the blank was estimated as the difference in the combined uncertainty calculated before and after the subtraction of the intensity of the blank.

Finally, the expanded uncertainty was calculated by multiplying the combined uncertainty, $u_c(R_{x,\text{corr}})$ with a coverage factor $k = 2$.

In Fig. 2, the different contributions to the combined uncertainty are visualized at concentrations of 5, 23 and 700 pg g^{-1} , corresponding to the minimum, median and maximum concentration found in the Antarctic snow samples analysed (see next section). In the first case, the major contributions came from the instrumental precision (57%) and the blank (37%), whereas the contribution from the uncertainty on the NIST SRM 981 certified value accounted for 6% only. On the other hand, at higher concentrations, 55–77% of the uncertainty is attributed to the uncertainty of the certified value, 20–41% is stemming from the Pb isotope ratio measurement precision, while the contribution to the uncertainty coming from the blank is lower than 2%.

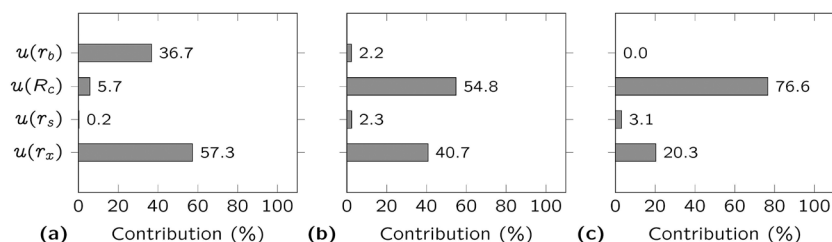


Fig. 2 Contribution to the combined uncertainty of the measurement precision for the Pb isotope ratio in the sample (r_x); the measurement precision for the Tl isotope ratio (r_s); the uncertainty associated to the certified value for NIST SRM 981 (R_c), and the blank (r_b). In sub-figures (a), (b) and (c) samples with a Pb concentration of 5, 23 and 700 pg g^{-1} are considered.



Despite the increased influence of the blank at low concentrations, it did not appear to be the main effect in the range of concentrations from 5 to 700 pg g^{-1} . The contribution from the uncertainty on the certified value was found to become dominant at concentrations above 20 pg g^{-1} . A better precision can be achieved when using the literature data obtained for NIST SRM 981 by double spike techniques^{24,25,28,29} instead of the NIST certified values, but it could be argued that the confidence in these data cannot be as high as in the certified values. At Pb concentrations below 20 pg g^{-1} , the uncertainty associated to the Pb isotope ratios can be reduced by up to 40% by increasing the instrument sensitivity. Additionally, lowering the blank level could result in reducing the uncertainty by more than 20% for samples with Pb concentrations below 10 pg g^{-1} .

3.6. Lead isotope ratios measured in recent Antarctic snow with monthly resolution

$^{207}\text{Pb}/^{206}\text{Pb}$, $^{208}\text{Pb}/^{206}\text{Pb}$ and $^{208}\text{Pb}/^{207}\text{Pb}$ isotopes ratios were determined in recent snow samples, collected on a monthly basis during the 2006 and 2010 campaigns. Snow from inland Antarctica is a very simple matrix, not requiring any Pb isolation step. Indeed, the most abundant species is Na^+ , the concentration of which is typically below 100 ng mL^{-1} .^{30,31} Therefore, the Na^+ concentration after the sample preparation step ($<10 \mu\text{g mL}^{-1}$) was well below the concentration (400 $\mu\text{g mL}^{-1}$) for

which Cocherie *et al.*²¹ reported a 0.09% bias in the MC-ICP-MS $^{207}\text{Pb}/^{206}\text{Pb}$ measurement.

The analytical procedure required 20 g of snow and about 10 minutes for each isotope ratio measurement. The Pb concentration was estimated by comparison of the Pb intensity observed for the sample to that of the closest standards (NIST SRM 981 at 10 ng mL^{-1}) and it ranged from 5 to 707 pg g^{-1} (0.1 to 14.1 ng of Pb), with a median value of 23 pg g^{-1} (0.5 ng of Pb). The estimated Pb amount, the ratios obtained and their uncertainties (95% confidence interval) are reported in Table 2.

At 5 pg g^{-1} Pb concentration, the uncertainty on the $^{207}\text{Pb}/^{206}\text{Pb}$ ratio ($n = 2$) was assessed to be $\sim 0.08\%$. This result is almost a factor of 5 better than that calculated for the data reported by Vallelonga *et al.*¹ (0.39%, $n = 7$) at 10 pg g^{-1} of Pb, using ID-TIMS and 10 g of snow.

In Fig. 3, the data are presented in a three-isotope plot. The Pb isotope ratios plotted on a straight line and are in agreement with data reported in literature.³² Particularly, data lie between the natural and the anthropogenic end-members reported by Van de Velde *et al.*,²⁶ and the actual values are similar to those measured at the Hercules Névé for the period 1986–1994. The same authors pointed out that the natural end-member is the result of a mixing of volcanic and crustal inputs, whereas the anthropogenic end-member was governed by both South American and Australian industrial emissions.

Also Pb isotope ratios measured in the coastal area of East Antarctica³³ are included in Fig. 3. These values are closer to the

Table 2 Lead isotope ratios measured in the snow collected at Dome C in the 2006 and 2010 campaigns. Uncertainties are reported as $\pm 95\%$ confidence interval

Date	Pb (ng)	$^{207}\text{Pb}/^{206}\text{Pb}$	U	$^{208}\text{Pb}/^{206}\text{Pb}$	U	$^{208}\text{Pb}/^{207}\text{Pb}$	U
2006							
Dec-05	2.5	0.8650	0.0002	2.1048	0.0006	2.4333	0.0008
Jan-06	0.2	0.8630	0.0010	2.0984	0.0016	2.4317	0.0014
Feb-06	—	—	—	—	—	—	—
Mar-06	0.5	0.8685	0.0002	2.1057	0.0005	2.4244	0.0004
Apr-06	0.5	0.8747	0.0002	2.1160	0.0005	2.4190	0.0004
May-06	0.8	0.8700	0.0002	2.1082	0.0005	2.4233	0.0004
Jun-06	0.5	0.8691	0.0002	2.1070	0.0005	2.4242	0.0004
Jul-06	0.4	0.8629	0.0002	2.1020	0.0008	2.4360	0.0007
Aug-06	0.2	0.8455	0.0011	2.0727	0.0016	2.4513	0.0017
Sep-06	0.3	0.8542	0.0004	2.0914	0.0007	2.4484	0.0006
Oct-06	1.1	0.8445	0.0002	2.0692	0.0005	2.4503	0.0005
Nov-06	0.1	0.8469	0.0009	2.0774	0.0014	2.4529	0.0013
Dec-06	—	—	—	—	—	—	—
2010							
Jan-10	0.2	0.8616	0.0020	2.0971	0.0035	2.4340	0.0025
Feb-10	2.0	0.8661	0.0002	2.1046	0.0004	2.4299	0.0004
Mar-10	1.4	0.8626	0.0002	2.0979	0.0004	2.4321	0.0003
Apr-10	1.0	0.8650	0.0002	2.1041	0.0004	2.4324	0.0003
May-10	14	0.8701	0.0002	2.1108	0.0006	2.4259	0.0007
Jun-10	0.4	0.8596	0.0002	2.0939	0.0005	2.4358	0.0005
Jul-10	0.6	0.8596	0.0003	2.0945	0.0006	2.4367	0.0007
Aug-10	0.2	0.8606	0.0004	2.0969	0.0008	2.4364	0.0008
Sep-10	1.3	0.8640	0.0005	2.1006	0.0008	2.4312	0.0012
Oct-10	0.3	0.8591	0.0004	2.0956	0.0007	2.4393	0.0007
Nov-10	0.1	0.8499	0.0005	2.0799	0.0014	2.4473	0.0019
Dec-10	0.4	0.8608	0.0002	2.0974	0.0006	2.4365	0.0006



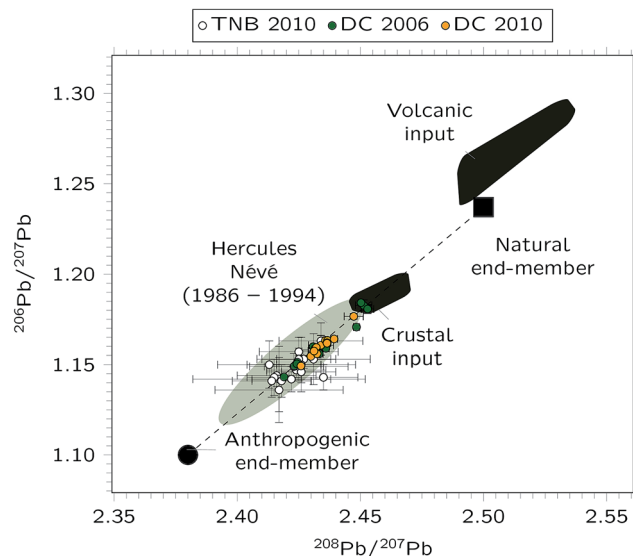


Fig. 3 Three-isotopes plot showing the results obtained for the Antarctic snow samples collected at Dome C during the 2006 (●) and 2010 (●) campaigns, respectively. For comparison, data from Bazzano *et al.*³³ determined in particulate matter from Terra Nova Bay (Coastal Antarctica) are also reported (○), while the shaded areas are from Van de Velde *et al.*²⁶ All the error bars represent 95% confidence intervals.

anthropogenic end-member than those measured on the Plateau, possibly indicating a larger anthropogenic input for the coastal area.

The time-series obtained for the years 2006 and 2010 are reported in Fig. 4. The first year showed a strong seasonal variation of the $^{208}\text{Pb}/^{207}\text{Pb}$ ratio, characterised by lower values from March to July 2006, and higher values from both December 2005 to January 2006, and from September to November 2006. Particularly, the ratios measured during spring showed values similar to those of the pelagic sediments and South Sandwich volcanic rock,²⁶ thus suggesting a predominance of crustal Pb for this period. This result partly contradicts that reported by Burn-Nunes *et al.*,³⁴ who found a maximum of both anthropogenic and mineral dust occurring during spring and autumn in the late 1880s. On the other hand, Planchon *et al.*³² reported evidence for close-to-radiogenic values for the

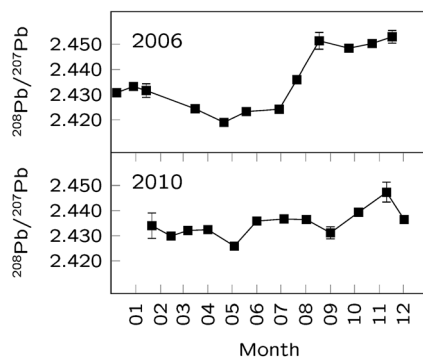


Fig. 4 Annual variation of the $^{208}\text{Pb}/^{207}\text{Pb}$ ratio for both the periods considered. Error bars represent 95% confidence intervals.

$^{206}\text{Pb}/^{207}\text{Pb}$ ratio occurring in spring/summer during maxima of dust deposition, likely originating from South America.

On the contrary, a clear seasonal trend was not apparent in the Pb isotope ratios recorded for the 2010 samples, showing just minor fluctuations around the average value ($^{208}\text{Pb}/^{207}\text{Pb} = 2.435 \pm 0.005$). The absence of a regular seasonal pattern was also reported by other authors, suggesting that the transport of aerosols and their deposition on the Antarctic ice sheet are complex and may vary from year to year.^{26,35} To improve the understanding of this variability and to highlight possible correlation with meteorological patterns, the analysis of more years and the use of additional chemical markers is clearly required.

4. Conclusions

The method developed allowed for MC-ICP-MS Pb isotopic analysis at concentrations as low as 0.5 ng mL^{-1} , using 0.2 mL of sample solution only. The intermediate precision of the $^{207}\text{Pb}/^{206}\text{Pb}$ measurement was 0.11% RSD ($n = 73$) and 0.31% RSD ($n = 3$) at 10 ng mL^{-1} and 0.5 ng mL^{-1} , respectively.

The small sample consumption allowed us to combine the method with a simple analyte pre-concentration procedure consisting of freeze-drying of 20 g samples of snow, thus providing accurate ratios at Pb concentration levels down to 5 pg g^{-1} . The mean concentration of the blanks ($0.5 \pm 0.3 \text{ pg g}^{-1}$) was sufficiently low to obtain reliable Pb isotope ratios in this range of concentrations. Particularly, at 5 pg g^{-1} , the uncertainty associated to the blank subtraction accounted for about 38% of the total uncertainty budget, thus still not representing the major contribution.

The analytical protocol developed was applied to the measurement of Pb isotope ratios in recent snow samples collected at Dome C (Antarctic Plateau) during the 2006 and 2010 campaigns. These are the first data of Pb isotope ratios measured in the Antarctic snow using MC-ICP-MS. The relative uncertainty of the ratios measured at 5 pg g^{-1} turned out to be competitive with that reported in literature for ID-TIMS. Moreover, the data provided some preliminary insights into the complex pattern of the transport of Pb towards Antarctica and its deposition on the ice sheet.

Acknowledgements

This study was partially funded by the Italian National Program for Research in Antarctica (Project 2013/AZ3.04). Thanks to Harry Vandepuit for his assistance with the hardware and Dr Paolo Grigioni for the help with meteorological data.

References

- 1 P. Vallelonga, P. Gabrielli, E. Balliana, A. Wegner, B. Delmonte, C. Turetta, G. Burton, F. Vanhaecke, K. J. R. Rosman, S. Hong, C. F. Boutron, P. Cescon and C. Barbante, *Quat. Sci. Rev.*, 2010, **29**, 247–255.
- 2 P. Vallelonga, P. Gabrielli, K. J. R. Rosman, C. Barbante and C. F. Boutron, *Geophys. Res. Lett.*, 2005, **32**, 1–4.



- 3 K. J. R. Rosman, W. Chisholm, C. F. Boutron, J.-P. Candelone, J.-L. Jaffrezo and C. I. Davidson, *Earth Planet. Sci. Lett.*, 1998, **160**, 383–389.
- 4 K. J. R. Rosman, W. Chisholm, C. F. Boutron, J.-P. Candelone and C. C. Patterson, *Geophys. Res. Lett.*, 1994, **21**, 2669–2672.
- 5 W. Chisholm, K. J. R. Rosman, C. F. Boutron, J. P. Candelone and S. Hong, *Anal. Chim. Acta*, 1995, **311**, 141–151.
- 6 P. Vallelonga, K. Van de Velde, J. P. Candelone, C. Ly, K. J. R. Rosman, C. F. Boutron, V. I. Morgan and D. J. Mackey, *Anal. Chim. Acta*, 2002, **453**, 1–12.
- 7 L. Balcaen, L. Moens and F. Vanhaecke, *Spectrochim. Acta, Part B*, 2010, **65**, 769–786.
- 8 J. L. Todoli and J. M. Mermet, *J. Anal. At. Spectrom.*, 2002, **17**, 913–921.
- 9 J.-L. Todoli and J.-M. Mermet, *J. Anal. At. Spectrom.*, 2002, **17**, 345–351.
- 10 C. Lagomarsino, M. Grotti, J. L. Todoli and J. M. Mermet, *J. Anal. At. Spectrom.*, 2007, **22**, 523.
- 11 F. Ardini, M. Grotti, R. Sánchez and J. L. Todoli, *J. Anal. At. Spectrom.*, 2012, **27**, 1400–1404.
- 12 M. Grotti, F. Ardini and J. L. Todoli, *Anal. Chim. Acta*, 2013, **767**, 14–20.
- 13 E. Paredes, M. Grotti, J. M. Mermet and J. L. Todoli, *J. Anal. At. Spectrom.*, 2009, **24**, 903.
- 14 E. Paredes, D. G. Asfaha, E. Ponzevera, C. Brach-Papa, M. Van Bockstaele, J. L. Todoli and C. R. Quétel, *J. Anal. At. Spectrom.*, 2011, **26**, 1372–1379.
- 15 E. Paredes, D. G. Asfaha and C. R. Quétel, *J. Anal. At. Spectrom.*, 2013, **28**, 320–326.
- 16 E. Paredes, J. L. Todoli and C. R. Quétel, *J. Anal. At. Spectrom.*, 2013, **28**, 327–333.
- 17 A. Bazzano and M. Grotti, *J. Anal. At. Spectrom.*, 2014, **29**, 926–933.
- 18 J. Woodhead, *J. Anal. At. Spectrom.*, 2002, **17**, 1381–1385.
- 19 D. C. Baxter, I. Rodushkin, E. Engström and D. Malinovsky, *J. Anal. At. Spectrom.*, 2006, **21**, 427.
- 20 M. Grotti, F. Soggia and J. Luis Todoli, *Analyst*, 2008, **133**, 1388–1394.
- 21 A. Cocherie and M. Robert, *Chem. Geol.*, 2007, **243**, 90–104.
- 22 T. Kuritani and E. Nakamura, *Chem. Geol.*, 2002, **186**, 31–43.
- 23 Y. Amelin and W. J. Davis, *J. Anal. At. Spectrom.*, 2006, **21**, 1053.
- 24 A. Makishima and E. Nakamura, *J. Anal. At. Spectrom.*, 2010, **25**, 1712.
- 25 M. F. Thirlwall, *Chem. Geol.*, 2002, **184**, 255–279.
- 26 K. Van de Velde, P. Vallelonga, J.-P. Candelone, K. J. R. Rosman, V. Gaspari, G. Cozzi, C. Barbante, R. Udisti, P. Cescon and C. F. Boutron, *Earth Planet. Sci. Lett.*, 2005, **232**, 95–108.
- 27 BIPM, IEC, IFCC, ISO, IUPAC, IUPAP and OIML, Guide to the expression of uncertainty in measurement, 2nd edn, 1995.
- 28 R. N. Taylor, O. Ishizuka, A. Michalik, J. A. Milton and I. W. Croudace, *J. Anal. At. Spectrom.*, 2014, **30**, 198–213.
- 29 J. Baker, D. Peate, T. Waight and C. Meyzen, *Chem. Geol.*, 2004, **211**, 275–303.
- 30 M. Grotti, F. Soggia, F. Ardini, E. Magi, S. Becagli, R. Traversi and R. Udisti, *Chemosphere*, 2015, DOI: 10.1016/j.chemosphere.2014.10.094, in press.
- 31 R. Udisti, S. Becagli, S. Benassai, E. Castellano, I. Fattori, M. Innocenti, A. Migliori and R. Traversi, *Ann. Glaciol.*, 2004, **39**, 53–61.
- 32 F. A. M. Planchon, K. Van de Velde, K. J. R. Rosman, E. W. Wolff, C. P. Ferrari and C. F. Boutron, *Geochim. Cosmochim. Acta*, 2003, **67**, 693–708.
- 33 A. Bazzano, F. Soggia and M. Grotti, *Environ. Chem.*, 2015, DOI: 10.1071/en14185, in press.
- 34 L. J. Burn-Nunes, P. Vallelonga, R. D. Loss, G. R. Burton, A. Moy, M. Curran, S. Hong, A. M. Smith, R. Edwards, V. I. Morgan and K. J. R. Rosman, *Geochim. Cosmochim. Acta*, 2011, **75**, 1–20.
- 35 F. A. M. Planchon, C. F. Boutron, C. Barbante, G. Cozzi, V. Gaspari, E. W. Wolff, C. P. Ferrari and P. Cescon, *Sci. Total Environ.*, 2002, **300**, 129–142.

